

Fixture Catalogue for
Industrial Field and
Hazardous Locations

IQL Australia

Smarter Lighting Solutions

6/24 Yalgar Road Kirrawee NSW 2232

Phone: 1300 475 444

www.iqlighting.com.au

team@iqlighting.com.au

All Copy Rights Reserved



Safe. Reliable. Efficient.

About iQL

- IQL is an Australian Owned and Operated business from its Head Office, Warehouse and Manufacturing facility in Sydney NSW. This JV with EVE Explosion Proof products provides our customers the opportunity for USA Made or PRC Made products.
- Over 10 years supplying the Australian market with high quality reliable Commercial and Industrial LED lighting products.
- IECEX / IEC Certified products.
- Worldwide network and service system with Global logistics offering maximum convenience to customers with prompt delivery and after sales services.

Features

- High quality SMT LED and Meanwell Driver
- Light-weight design with aircraft aluminum
- Heavy-duty and high impact resistance
- Three connection cable entry points
- Replaceable LED board and drivers
- Integrated junction box for driver with emergency back up
- Dimmable and battery back-up functions available
- Marine-rating powder-coated surface treatment
- 10kv surge protection
- Up to ten years of limited warranty option
- Emergency Battery back up
- Working temperature can be as low as 85°C
- Various installation methods for different applications

Mark





CONTENTS

CONTENTS

LED Explosion Proof Light

High Bay A Series	05
High Bay B Series	07
High Bay C Series	09
Linear Light H Series	11
Linear Light I Series	13
Mini Tunnel Light O Series	15
High Bay Q Series	15
Linear Light R Series	17
High Bay S Series	19
Street Light STA Series	21

LED Explosion Proof Light

Flood Light STA4 Series	23
Linear Light FLC Series	25
Linear Light FLE Series	25
Linear Light FLF Series	27
Exit Sign ES01 Series	29
Exit Light V Series	29
Exit Sign ES02 Series	31
Warning Device W Series	33
Portable Light WKC Series	35
Remote Area Lighting System	35
Portable Light WKE Series	37
Flash Light WKG Series	37
Headlamp HDA Series	39
Oil Station Light CPA Series	41
Food Light B Series	43



CONTENTS

CONTENTS

High Bay

High Temperature High Bay Series	45
----------------------------------	----

Explosion Proof Electrical Products

Ex-proof Illumination Switch	49
HD51 Junction Box	50
Ex-proof Motion Sensor	51
Ex-proof Instrumentation	52
EJB Junction Box	53
Ex-proof Distribution Equipmen	54
Ex-proof Terminal Box	55
Illumination Distribution Box	56
Distribution Box	57
Control Station	58
Motor Switch	59
Motor Starter	60
Control Unit Systems	61
Alloy Bushings	62
Ex-proof Plug and Socket	63
Seal Bushing	64
Pushbutton	65
Indicator	66
Flexible Conduit	67
Ex-proof Connector	68
Cable Gland	69
Control Switch	74

LED Explosion Proof Light Series





LED Explosion Proof Light

High Bay A Series



EXPLOSION PROTECTION

Marking ATEX

- II 3 G Ex ec IIC T3 Gc
- II 2 D Ex tb IIIC T103°C Db
- II 2 G Ex mb eb IIC T5 Gb
- II 2 D Ex tb IIIC T95°C Db IP66

Marking IECEx

- Ex ec IIC T3C Gc
- Ex tb IIIC T103°C Db
- Ex mb eb IIC T5 Gb
- Ex tb IIIC T95°C Db Ip66

Marine Marking

- UL 1598, UL1598A
- ABS
- Other Rating
- IP 66



Model: EX-xxxW AYZDA
Rated Power: 80W-100W
Lumen Output: 11200-14000 Lm



Model: EX-xxW A2YZDA
Rated Power: 20W-60W
Lumen Output: 2800-14000 Lm



Model: EX-xxxW A3YZDA
Rated Power: 150W-200W
Lumen Output: 21000-28000 Lm



Model: EX-xxxW A4YZDA
Rated Power: 150W-400W
Lumen Output: 21000-56000 Lm



LED Explosion Proof Light

High Bay B Series



EXPLOSION PROTECTION

Marking ATEX

- I12 G Ex mb eb IIC T4 Gb
- I12 D Ex tb IIIC T135°C Db IP66
- I13 G Ex ec IIC T3C Gc
- I12 D Ex tb IIIC T135°C Db IP66

Marking IECEx

- Ex mb eb IIC T4 Gb
- Ex tb IIIC T135°C Db IP66
- Ex ec IIC T3C Gc
- Ex tb IIIC T135°C Db IP66

Marine Marking

- UL1598, UL1598A

ABS

Other Rating

- IP 66



Model: EX-xxW BYZDA
Rated Power: 60W-80W
Lumen Output: 8400-11200 Lm



Model: EX-xxW B2YZDA
Rated Power: 20W-40W
Lumen Output: 2800-5600 Lm



Model: EX-xxxW B3YZDA
Rated Power: 100W-200W
Lumen Output: 14000-28000 Lm



Model: EX-xxxW B4YZDA
Rated Power: 250W-400W
Lumen Output: 35000-56000 Lm



LED Explosion Proof Light High Bay C Series



EXPLOSION PROTECTION

Marking ATEX

II2 G Ex db IIB T5/T6 Gb

II2 D Ex tb IIIC T80°C/T90°C Db IP66

Marking IECEx

Ex db IIB T5/T6 Gb

Ex tb IIIC T80°C/T90°C Db IP66

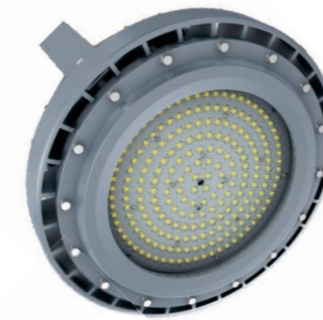
Marine Marking

UL1598, UL1598A

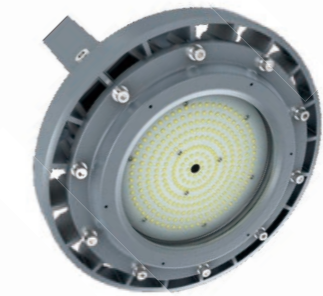
ABS

Other Rating

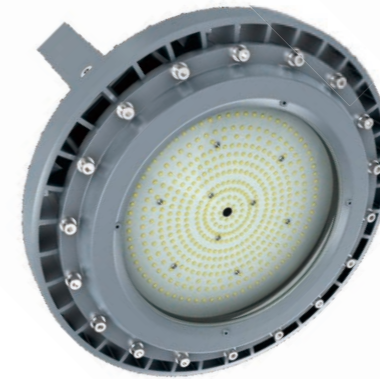
IP 66



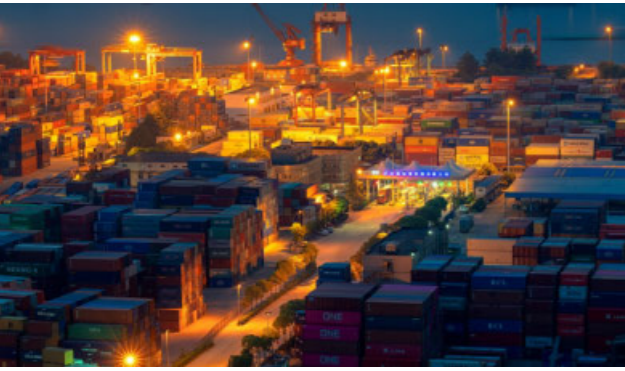
Model: EX-xxxW CYZDA
Rated Power: 100W-150W
Lumen Output: 14000-21000 Lm



Model: EX-xxW C2YZDA
Rated Power: 20W-80W
Lumen Output: 2800-11200 Lm



Model: EX-xxxW C3YZDA
Rated Power: 120W-200W
Lumen Output: 28000-39200 Lm



LED Explosion Proof Light Linear Light H Series



EXPLOSION PROTECTION

Marking ATEX

II3 G Ex ec IIC T5/T6 Gc

II2 D Ex tb IIIC T80°C/T100°C Db IP66

Marking IECEx

Ex ec IIC T5/T6 Gc

Ex tb IIIC T80°C/T100°C Db IP66

Marking Marine

UL1598, UL1598A

ABS

Other Rating

IP 66



Model: EX-xxW H2YZDA
Rated Power: 20W-40W
Lumen Output: 2800-5600 Lm



Model: EX-xxW H4YZDA
Rated Power: 40W-80W
Lumen Output: 5600-11200 Lm

LED EXPLOSION PROOF LIGHT



LED Explosion Proof Light Linear Light I Series



EXPLOSION PROTECTION

Marking ATEX

II2 G Ex db op is IIB T4/T5 Gb

II2 D Ex op is tb IIIC T135°C Db IP66

Marking IECEx

Ex db op is IIB T4/T5 Gb

Ex op is tb IIIC T135°C Db IP66

Marking Marine

UL1598, UL1598A

ABS

Other Rating

IP 66



Model: EX-xxW I2YZDA
Rated Power: 20W-60W
Lumen Output: 2800-8400 Lm



Model: EX-xxxW I4YZDA
Rated Power: 60W-120W
Lumen Output: 8400-16800 Lm

LED EXPLOSION PROOF LIGHT



LED Explosion Proof Light

Mini Tunnel Light O Series



EXPLOSION PROTECTION

Marking ATEX

II 2 G Ex eb mb IIC T6/T5 Gb
II 2 D Ex tb IIIC T80°C/T95°C Db IP66

Marking IECEx

Ex eb mb IIC T6/T5 Gb
Ex tb IIIC T80°C/T95°C Db IP66

Marking Marine

UL 1598A
NEMA 3, 4X, IP66



Model: EX-xxW OYZDA
Rated Power: 10W-30W
Lumen Output: 1400-4200 Lm

High Bay Q Series



EXPLOSION PROTECTION

Marking ATEX

II 2 G Ex np IIC T6/T5 GC
II 2 D Ex op is tb IIIC T95°C/T80°C Db

Marking IECEx

Ex np IIC T6/T5 GC
Ex op is tb IIIC T95°C/T80°C Db

Other Rating

IP 66



Model: EX-xxW Q1YZDA
Rated Power: 20W-100W
Lumen Output: 2800-11200 Lm



Model: EX-xxxW Q2YZDA
Rated Power: 100W-200W
Lumen Output: 14000-28000 Lm

LED EXPLOSION PROOF LIGHT



LED Explosion Proof Light Linear Light R Series



EXPLOSION PROTECTION

Marking ATEX

II 2 G Ex db eb mb IIC T5/T6 Gb

II 2 D Ex tb IIIC T95°C/T85°C Db IP66

Marking IECEx

Ex db eb mb IIC T5/T6 Gb

Ex tb IIIC T95°C/T85°C Db

Marine Marking

UL 1598

UL 844

Other Rating

IP 66



Model: EX-xxW R2YZDA
Rated Power: 20W-40W
Lumen Output: 2800-5600 Lm



Model: EX-xxW R4YZDA
Rated Power: 30W-80W
Lumen Output: 4200-11200 Lm

LED EXPLOSION PROOF LIGHT



LED Explosion Proof Light High Bay S Series



EXPLOSION PROTECTION

Marking ATEX

II 2 G Ex db IIC T6/T5/T4 Gb

II 2 D Ex tb IIIC T80°C/T95°C/T135°C Db

Marking IECEx

Ex db IIC T6/T5/T4 Gb

Ex tb IIIC T80°C/T95°C/T135°C Db

Other Rating

IP 66

IK 10



Model: EX-xxW S1YZDA
Rated Power: 20W-100W
Lumen Output: 2800-11200 Lm



Model: EX-xxxW S2YZDA
Rated Power: 100W-200W
Lumen Output: 14000-28000 Lm

LED EXPLOSION PROOF LIGHT



LED Explosion Proof Light Street Light STA Series



EXPLOSION PROTECTION

Marking ATEX

II2 G Ex db eb mb IIC T6/T5 Gb

II2 D Ex tb tp IIIC T80°C/T95°C Db IP66

Marking IECEx

Ex db eb mb IIC T6/T5 Gb

Ex tb tp IIIC T80°C/T95°C Db IP66

Other Rating

IP 66



Model: EX-xxxW STA1
Rated Power: 10W-300W
Lumen Efficiency: 120-140 Lm/W



Model: EX-xxxW STA2
Rated Power: 10W-200W
Lumen Efficiency: 120-140 Lm/W



Model: EX-xxxW STA3
Rated Power: 10W-200W
Lumen Efficiency: 120-140 Lm/W



LED Explosion Proof Light Flood Light STA4 Series



EXPLOSION PROTECTION

Marking ATEX

II2 G Ex db eb mb IIC T6/T5 Gb

II2 D Ex tb tp IIIC T80°C/T95°C Db IP66

Marking IECEx

Ex db eb mb IIC T6/T5 Gb

Ex tb tp IIIC T80°C/T95°C Db IP66

Other Rating

IP 66



Model: EX-xxxW STA4-A
Rated Power: 10W-35W
Lumen Efficiency: 140 Lm/W



Model: EX-xxxW STA4-B
Rated Power: 10W-70W
Lumen Efficiency: 140 Lm/W



Model: EX-xxxW STA4-C
Rated Power: 20W-150W
Lumen Efficiency: 140 Lm/W



LED Explosion Proof Light

Linear Light FLC/FLE Series



EXPLOSION PROTECTION

Marking ATEX

II2 G Ex db eb mb IIC T6/T5 Gb

II2 D Ex tb tp IIIC T80°C/T95°C Db IP66

Marking IECEx

Ex db eb mb IIC T6/T5 Gb

Ex tb tp IIIC T80°C/T95°C Db IP66

Other Rating

IP 66



Model: EX-xxW-FLC2 AZDA
Rated Power: 10W-40W
Lumen Efficiency: 130Lm/W



Model: EX-xxW-FLC4 AZDA
Rated Power: 40W-80W
Lumen Efficiency: 130Lm/W



Model: EX-xxW-FLC5 AZDA
Rated Power: 60W-100W
Lumen Efficiency: 140Lm/W



Model: EX-xxW-FLE2 AZDA
Rated Power: 10W-40W
Lumen Efficiency: 130Lm/W



Model: EX-xxW-FLE4 AZDA
Rated Power: 40W-80W
Lumen Efficiency: 130Lm/W



Model: EX-xxW-FLE5 AZDA
Rated Power: 60W-100W
Lumen Efficiency: 140Lm/W

LED EXPLOSION PROOF LIGHT



LED Explosion Proof Light

Linear Light FLF Series



EXPLOSION PROTECTION

Marking ATEX

II2 G Ex db eb mb IIC T6/T5 Gb

II2 D Ex tb tp IIIC T80°C/T95°C Db IP66

Marking IECEx

Ex db eb mb IIC T6/T5 Gb

Ex tb tp IIIC T80°C/T95°C Db IP66

Other Rating

IP 66



Model: EX-xxW-FLF1 AZDA
Rated Power: 10W-30W
Lumen Efficiency: 120 - 140 Lm/W



Model: EX-xxW-FLF2 AZDA
Rated Power: 10W-50W
Lumen Efficiency: 120 - 140 Lm/W



Model: EX-xxW-FLF3 AZDA
Rated Power: 10W-70W
Lumen Efficiency: 120 - 140 Lm/W



Model: EX-xxW-FLF4 AZDA
Rated Power: 10W-80W
Lumen Efficiency: 120 - 140 Lm/W



Model: EX-xxW-FLF5 AZDA
Rated Power: 10W-100W
Lumen Efficiency: 120 - 140 Lm/W

LED EXPLOSION PROOF LIGHT



LED Explosion Proof Light

Exit Sigh ES01 Series



EXPLOSION PROTECTION

Marking ATEX

II 2 G Ex db mb eb op is q IIC T5/T6 Gb
II 2 D Ex op is tb IIIC T80°C/T100°C Db IP66

Marking IECEx

Ex db mb eb op is q IIC T5/T6 Gb
Ex op is tb IIIC T80°C/T100°C Db IP66

Other Rating

IP66

Exit Light V Series



EXPLOSION PROTECTION

Marking ATEX

II 2 G Ex ib IIC T6 Gb
II 2 D Ex tb IIIC T80°C Db Ip66

Marking IECEx

Ex ib IIC T6 Gb
Ex tb IIIC T80°C Db IP66

Marking Marine

UL 924
Other Rating
IP 66



Model: EX-xxW ES01YZDA
Rated Power: 1-15W
Emergency Time: 120 Mins



Model: EX-xW VYZDA
Rated Power: 1W/2W/3W
Emergency Time: 180 Mins

LED EXPLOSION PROOF LIGHT



LED Explosion Proof Light

Exit Sign ES02 Series



EXPLOSION PROTECTION

Marking ATEX

II 2 G Ex db IIB+H₂ T6 Gb

II 2 D Ex tb IIIC T70°C Db

Marking IECEx

Ex db IIB+H₂ T6 Gb

Ex tb IIIC T70°C Db

Other Rating

IP66



Model: EX-xxW ES02A1N40
Rated Power: 15W
Emergency Time: 90 Mins



Model: EX-XXW ES02B1N50
Rated Power: 1W-6W
Emergency Time: 90 Mins



Model: EX-5W ES02B2N50A
Rated Power: 1-15W
Emergency Time: 90 Mins



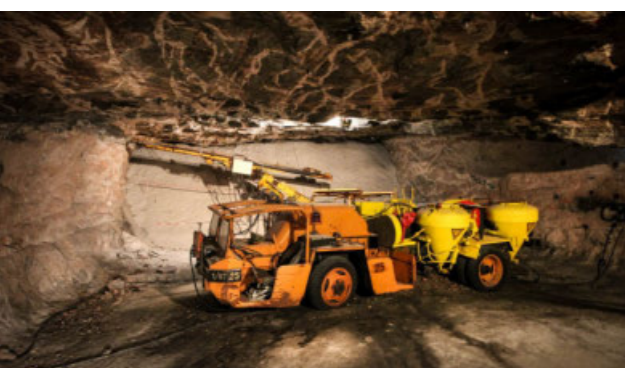
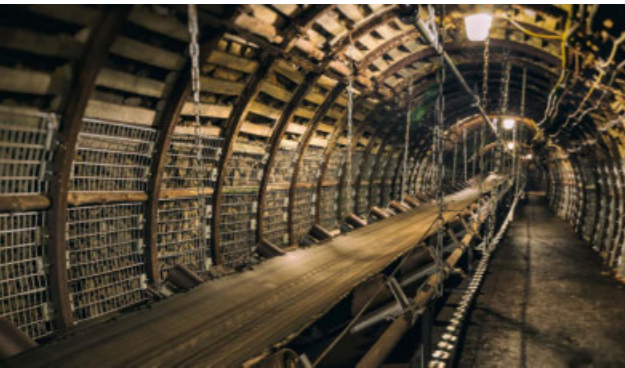
Model: EX-5W ES02B3N50A
Rated Power: 1W-5W
Emergency Time: 90 Mins



Model: EX-7W ES02B4N50A
Rated Power: 3W-9W
Emergency Time: 90 Mins



Model: EX-XXW ES02B4N50A
Rated Power: 3W-9W
Emergency Time: 90 Mins



LED Explosion Proof Light Warning Device W Series



EXPLOSION PROTECTION

Marking ATEX

II 2 G Ex db IIC T6 Gb

II 2 D Ex tb IIIC T80°C Db Ip66

Marking IECEx

Ex db IIC T6 Gb

Ex tb IIIC T80°C Db IP66

Other Rating

IP 66



Model: EX-WSLxxxJSxxdB-1

Light Source: High intensity Discharge Lamp

Max Wattage/Joule: 5J

Voltage: AC 220-240V

Model: EX-WSLExxWSxxdB-1

Light Source: LED

Max Wattage/Joule: 35W(25+10)

Voltage: AC 220-240V



Model: EX-WSSxxdB-1

Max Wattage/Joule: 25W

Voltage: AC 220-240V / DC24V(18-36)



Model: EX-WSLxxxJ-3

Light Source: High intensity Discharge Lamp

Max Wattage/Joule: 5J

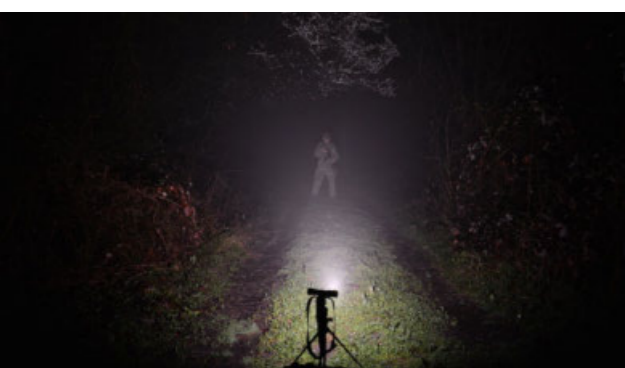
Voltage: AC 220-240V

Model: EX-WSLExxW-3

Light Source: LED

Max Wattage/Joule: 10W

Voltage: AC 220-240V / DC24V(18-36)



LED Explosion Proof Light

Portable Light WKC Series



EXPLOSION PROTECTION

Marking ATEX

II 3GD Ex ec is IIC T4 Gc

Marking IECEx

Ex tc is IIIC T135°C Dc

Other Rating

IP66

Remote Area Lighting System



EXPLOSION PROTECTION

Marking ATEX

II 1G Ex ia IIC T4 Ga

Marking IECEx

Ex ia IIC T4 Ga

Marking UI913

Class I, Division 1, Groups A, B, C and D, T4

Ex ia IIC T4 Ga

Class I, Zone 0, AEx ia IIC T4 Ga

IP Rating

20



Model: EX-XXXW-WKC1YZDA

Rated Power: 10W

Emergency Time: 90 Min



Model: EX-XXXW-WKC2YZDA

Rated Power: 10W

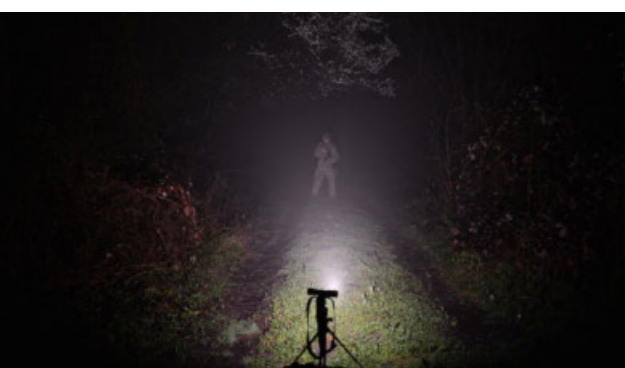
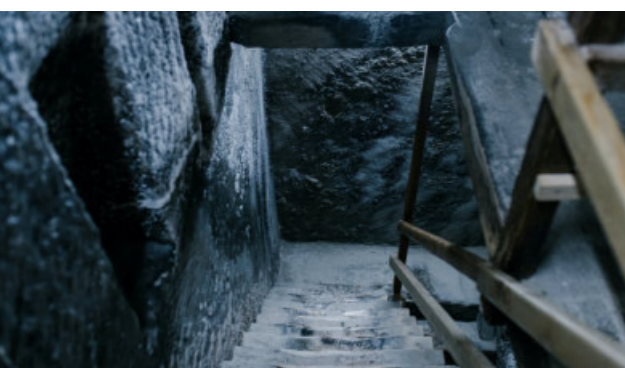
Emergency Time: 90 Min



Model: EX-MV01

Rated Power: 5-19.5W

Lumen Output: 1600Lm(Strong light)
≥500Lm(work light)



LED Explosion Proof Light

Portable Light WKE Series



EXPLOSION PROTECTION

UL Standard

- Class I, Division 1, Groups A, B, C, D
- Class I, Division 2, Groups A, B, C, D
- Class II, Division 1, Groups E, F, G
- Class II, Division 2, Groups F, G
- Class III

ATEX & IECEx Standard

- II 1G Ex ia IIC T4 Ga IP67
- II 1D Ex ia IIIC T135°C Da
- I M1 Ex ia I Ma IP67

Flash Light WKG Series



EXPLOSION PROTECTION

Atex Standard

- I M1 Ex ia op is I Ma
- II 1G Ex ia op is IIC T4 Ga
- II 1D Ex ia op is IIIC T130°C Da

IECEx Standard

- Ex ia op is I Ma
- Ex ia op is IIC T4 Ga
- Ex ia op is IIIC T130°C Da

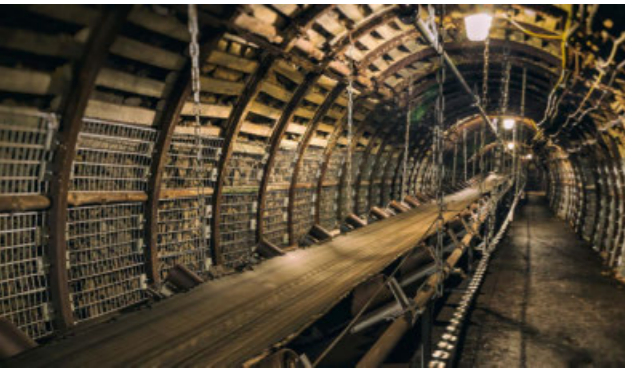


Model: EX-002W-WKE-RY/RG/YG
Light Source Output: >350 lm(White)
Working Time: 11 Hrs (Normal)
 22 Hrs (Beacon Mode)



Model: EX-002W-WKG
Rated Power: 2W
Light Duration: >7 Hrs

LED EXPLOSION PROOF LIGHT



LED Explosion Proof Light Headlamp HDA Series



EXPLOSION PROTECTION

Atex Standard

I M1 Ex ia op is I Ma

II 1G Ex ia op is IIC T4 Ga

II 1D Ex ia op is IIIC T130°C Da IP54

IECEx Standard

Ex ia op is I Ma

Ex ia op is IIC T4 Ga

Ex ia op is IIIC T130°C Da IP54

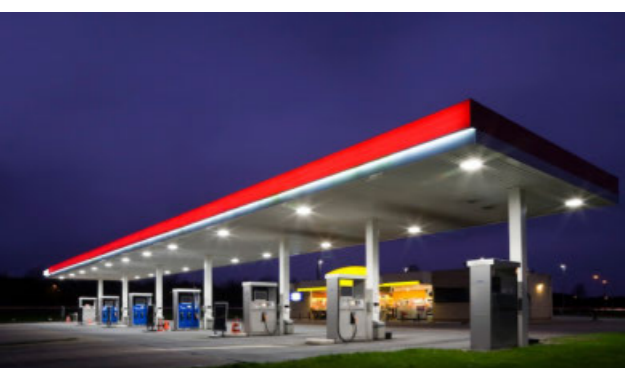


Model: EX-002W-HDA 1
Rated Power: 2W
Light Duration: 20 Hrs (High Flashing)
40 Hrs (Low Flashing)



Model: EX-002W-HDA 2
Rated Power: 2W
Light Duration: 7.5 Hrs (High Flashing)
16 Hrs (Low Flashing)

LED EXPLOSION PROOF LIGHT



LED Explosion Proof Light Oil Station Light CPA Series



EXPLOSION PROTECTION

Marking Atex

II2 G Ex eb IIC T5/T6 GC

II2 D Ex tb IIIC T80° C/T90° C Db

Marking IECEx

Ex eb IIC T5/T6 GC

Ex tb IIIC T80° C/T90° C Db

Other Rating

IP 66



Model: EX-xxxW CPAYZ
Rated Power: 40W/60W/80W/150W
Lumen Output: 5600-21000 Lm

LED EXPLOSION PROOF LIGHT



LED Explosion Proof Light

Food Light B Series



EXPLOSION PROTECTION

Marking Atex

I13 G Ex ec IIC T3C Gc

I12 Ex tb IIIC T135°C Db IP66

Marking IECEx

Ex ec IIC T3C GC

Ex tb IIIC T135°C Db IP66

Food Safety

NSF

Other Rating

IP 66



Model: EX-xxW BYZD A-F
Rated Power: 60W/80W
Lumen Output: 8400-11200 Lm



Model: EX-xxW B2YZD A-F
Rated Power: 20W/40W
Lumen Output: 2800-5600 Lm



Model: EX-xxxW B3YZD A-F
Rated Power: 100W/120W/150W/200W
Lumen Output: 14000-28000 Lm

LED EXPLOSION PROOF LIGHT



High Temperature High Bay Series

High Temperature High Bay Series

Operating temperature: 70°C (≥100W)
80°C (≤100W)



Model: HB-xxxW A1DZ
Rated Power: 10-150W
Efficiency: 140 Lm/W



Model: HB-xxxW A2DZ
Rated Power: 150W-300W
Efficiency: 150 Lm/W



Model: HB-xxxW A4DZ
Rated Power: 300W-600W
Efficiency: 150 Lm/W

HIGH BAY

Explosion Proof Electrical Products



Explosion Proof Electrical Products

Ex-proof Illumination Switch



EXPLOSION PROTECTION

Marking ATEX

II 2 G Ex db IIC T6 Gb

II 2 D Ex tb III C T80°C Db IP66

Marking IECEx

Ex db IIC T6 Gb

Ex tb III C T80°C Db IP66

Marking UL1203

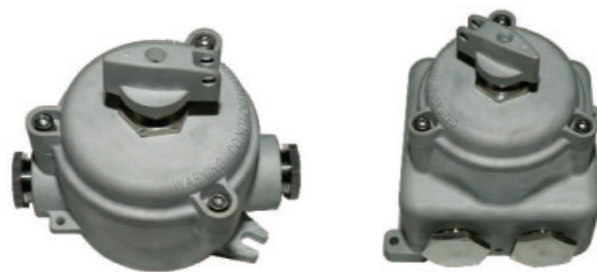
Class I, Division 1, Groups B, C, D

Class I, Division 2, Groups B, C, D

Class II, Division 1, Groups E, F, G

Class II, Division 2, Groups F, G

Class III



Model: EX-ZM-□-□

Rated Current: 16A, 25A

Rated Voltage: Max.660VAC

Explosion Proof Electrical Products

HD51 Junction Box



EXPLOSION PROTECTION

Marking UL1203

Class I, Division 1, Groups A, B, C, D;

(Type KB1 and KYD without A and B)

Class I, Division 2, Groups A, B, C, D;

Class II, Division 1, Groups E, F, G

Class II, Division 2, Groups F, G

Class III



Model: HD51-□-□

Rated Current: 24A, 32A, 41A

Rated Voltage: Max.800VAC

Explosion Proof Electrical Products

Ex-proof Motion Sensor/Photocell sensor



EXPLOSION PROTECTION

Marking ATEX

II 2G Ex db IIC T6 Gb

II 2D Ex tb IIIC T80°C Db IP66/IP67

Marking IECEx

Ex db IIC T6 Gb

Ex tb IIIC T80°C Db

Marking UL1203

Class I, Division 1, Groups A, B, C, D

Class I, Division 2, Groups A, B, C, D

Class II, Division 1, Groups E, F, G

Class II, Division 2, Groups F, G

Class III



Model: EX-IN 01-□MS/OS/MO

Rated Load: 120V@400W/ 220-240V@800W/277V@1000W

Operating Voltage: 120~277VAC, 50Hz

Explosion Proof Electrical Products

Ex-proof Toxic and harmful gas Instrumentation



EXPLOSION PROTECTION

Marking ATEX

II 2G Ex db IIC T6 Gb

II 2D Ex tb IIIC T80°C Db IP66/IP67

Marking IECEx

Ex db IIC T6 Gb

Ex tb IIIC T80°C Db

Marking UL1203

Class I, Division 1, Groups A, B, C, D

Class I, Division 2, Groups A, B, C, D

Class II, Division 1, Groups E, F, G

Class II, Division 2, Groups F, G

Class III



Model: EX-IN 01-□-CGD/TGD/VOC

EX-IN 01-□-SCGD/STGD/SVOC

Explosion Proof Electrical Products

EJB Junction Box



EXPLOSION PROTECTION

Marking ATEX

II 2G Ex db IIB Gb

II 2D Ex tb IIIC Db

Marking IECEx

Ex db IIB Gb

Ex tb IIIC Db

Marking UL1203

- Class I, Division 1, Groups C, D
- Class I, Division 2, Groups C, D
- Class II, Division 1, Groups E, F, G
- Class II, Division 2, Groups F, G
- Class III



Model: EJB-A

Explosion Proof Electrical Products

Ex-proof Distribution Equipment



EXPLOSION PROTECTION

Marking ATEX

II 2 G Ex db II B+H₂ T_□¹Gb

II 2 D Ex tb III C T_□¹Db IP66

Marking IECEx

Ex db II B+H₂ T_□¹Gb

Ex tb III C T_□¹Db IP66

Marking UL1203

- Class I, Division 1, Groups C, D
- Class I, Division 2, Groups C, D
- Class II, Division 1, Groups E, F, G
- Class II, Division 2, Groups F, G
- Class III



Model: EX-PD61-□-□/□/□/□
Rated Current: Max.1,200A
Rated Voltage: Max.1,000VAC, 50/60Hz

Explosion Proof Electrical Products

Ex-proof Terminal Box



EXPLOSION PROTECTION

Marking ATEX

II 2 G Ex db IIB+H₂ T6/T5 Gb
II 2 D Ex tb III C T80°C/95°C Db IP66

Marking IECEx

Ex db IIB+H₂ T6/T5 Gb
Ex tb III C T80°C/T95°C Db IP66

Marking UL1203

Class I, Division 1, Groups C, D
Class I, Division 2, Groups C, D
Class II, Division 1, Groups E, F, G
Class II, Division 2, Groups F, G
Class III



Model: EX-PD61-JX-IIB-□□
Rated Voltage: Max. 800VAC

Explosion Proof Electrical Products

Illumination Distribution Box



EXPLOSION PROTECTION

Marking ATEX

II 2 G Ex d IIB T6 Gb
II 2 D Ex tb III C T80°C Db IP66

Marking IECEx

Ex db IIB+H₂ T6 Gb
Ex tb III C T80°C Db IP66

Marking UL1203

Class I, Division 1, Groups C, D
Class I, Division 2, Groups C, D
Class II, Division 1, Groups E, F, G
Class II, Division 2, Groups F, G
Class III



Model: EX-PD61-ZM-□/□/□/□
Rated Current: Max.100A
Rated Voltage: Max.690VAC, 50/60Hz

Explosion Proof Electrical Products

Distribution Box



EXPLOSION PROTECTION

Marking ATEX

II 2 G Ex db II B+H₂ T6 Gb
 II 2 D Ex tb III C T80°C Db IP66

Marking IECEx

Ex db II B+H₂ T6 Gb
 Ex tb III C T80°C Db IP66

Marking UL1203

Class I, Division 1, Groups C, D
 Class I, Division 2, Groups C, D
 Class II, Division 1, Groups E, F, G
 Class II, Division 2, Groups F, G
 Class III



Model: EX-PD61-DL-□/□/□/□
Rated Current: Max.630A
Rated Voltage: Max.690VAC, 50/60Hz

Explosion Proof Electrical Products

Control Station



EXPLOSION PROTECTION

Marking ATEX

II 2 G Ex db II B+H₂ T6 Gb
 II 2 D Ex tb III C T80°C Db IP66

Marking IECEx

Ex db II B+H₂ T6 Gb
 Ex tb III C T80°C Db IP66

Marking UL1203

Class I, Division 1, Groups C, D
 Class I, Division 2, Groups C, D
 Class II, Division 1, Groups E, F, G
 Class II, Division 2, Groups F, G
 Class III



Model: EX-PD61-ZC-A□B□D□K□
Rated Current: 10A
Rated Voltage: Max.415VAC

Explosion Proof Electrical Products

Motor Switch



EXPLOSION PROTECTION

Marking ATEX

II 2 G Ex db IIB T6 Gb

II 2 D Ex tb III C T80°C Db IP66

Marking IECEx

Ex db IIB T6 Gb

Ex tb III C T80°C Db IP66

Marking UL1203

Class I, Division 1, Groups C, D
Class I, Division 2, Groups C, D
Class II, Division 1, Groups E, F, G
Class II, Division 2, Groups F, G
Class III



Model: EX-PD61-LK-□/□/□/□

Explosion Proof Electrical Products

Motor Starter



EXPLOSION PROTECTION

Marking ATEX

II 2 G Ex d IIB T6/T5 Gb

II 2 D Ex tb III C T80°C/T95°C Db IP66

Marking IECEx

Ex d IIB T6/T5 Gb

Ex tb III C T80°C/T95°C Db IP66

Marking UL1203

Class I, Division 1, Groups C, D
Class I, Division 2, Groups C, D
Class II, Division 1, Groups E, F, G
Class II, Division 2, Groups F, G
Class III



Model: EX-PD61-QD-□/□/□/□
Rated Voltage: 380/400V AC, 50/60Hz

Explosion Proof Electrical Products

Control Unit Systems



EXPLOSION PROTECTION

Marking ATEX

II 2 G Ex db IIC T6 Gb

II 2 D Ex tb III C T80°C Db IP66

Marking IECEx

Ex db IIC T6 Gb

Ex tb III C T80°C Db IP66

Marking UL1203

Class I, Division 1, Groups B, C, D

Class I, Division 2, Groups B, C, D

Class II, Division 1, Groups E, F, G

Class II, Division 2, Groups F, G

Class III



Model: EX-ZA-B□D□K□-□

Rated Current: Max.10A(AC), 6A(DC)

Rated Voltage: Max.800V(AC)

Explosion Proof Electrical Products

Alloy Bushings



EXPLOSION PROTECTION

Marking ATEX

II 2 G Ex eb IIC Gb

II 2 D Ex tb III C Db IP66

Marking IECEx

Ex eb IIC Gb

Ex tb III C Db IP66

Marking UL1203

Class I, Division 2, Groups A, B, C, D

Class II, Division 1, Groups E, F, G

Class II, Division 2, Groups F, G

Class III



Model: EX-HC-□□□

Rated Current: Max.100A

Rated Voltage: Max.AC690V, 50/60Hz

Explosion Proof Electrical Products

Ex-proof Plug and Socket



EXPLOSION PROTECTION

Marking ATEX

II 2 G Ex db IIC T6 Gb
II 2 D Ex tb IIIC T80°C Db IP66/IP67

Marking IECEx

Ex db IIC T6 Gb
Ex tb IIIC T80°C Db IP66/IP67

Marking UL1203

Class I, Division 1, Groups B, C, D
Class I, Division 2, Groups B, C, D
Class II, Division 1, Groups E, F, G
Class II, Division 2, Groups F, G
Class III



Model: EX-CZ81-16
EX-CZ81-32
Rated Current: 16A, 32A

Model: EX-CZ81-63
Rated Current: 63A

Model: EX-CZ81-125
Rated Current: 125A

Explosion Proof Electrical Products

Seal Bushing



EXPLOSION PROTECTION

Marking ATEX

II 2 G Ex db IIC Gb/II 2 G Ex eb IIC Gb
II 2 D Ex tb IIIC Db IP66

Marking IECEx

Ex db IIC Gb/Ex eb IIC Gb
Ex tb IIIC Db IP66

Marking UL1203

Class I, Division 1, Groups A, B, C, D
Class I, Division 2, Groups A, B, C, D
Class II, Division 1, Groups E, F, G
Class II, Division 2, Groups F, G
Class III



Model: EX-AG-□□□

Explosion Proof Electrical Products

Pushbutton



EXPLOSION PROTECTION

Marking ATEX

II 2 G Ex db IIC Gb

II 2 D Ex tb III C T80°C Db IP66-IP68

Marking IECEx

Ex db IIC Gb

Ex tb III C T80°C Db IP66-IP68

Marking UL1203

Class I, Division 1, Groups B, C, D

Class I, Division 2, Groups B, C, D

Class II, Division 1, Groups E, F, G

Class II, Division 2, Groups F, G

Class III



Model: EX-A-□

Rated Current: 10A

Rated Voltage: Max.415VAC

Explosion Proof Electrical Products

Indicator



EXPLOSION PROTECTION

Marking ATEX

II 2G Ex db IIC Gb

II 2D Ex tb III C Db IP66/IP67

Marking IECEx

Ex db IIC Gb

Ex tb III C Db IP66/IP67

Marking UL1203

Class I, Division 1, Groups A, B, C, D

Class I, Division 2, Groups A, B, C, D

Class II, Division 1, Groups E, F, G

Class II, Division 2, Groups F, G

Class III



Model: EX-D-□□

Explosion Proof Electrical Products

Flexible Conduit



EXPLOSION PROTECTION

Marking ATEX

II 2 G Ex db IIC T4/T5 Gb
II 2 D Ex tb IIIC T135°C Db IP66

Marking IECEx

Ex db IIC T4/T5 Gb
Ex tb IIIC T135°C Db IP66

Marking UL1203

Class I, Division 1, Groups A, B, C, D
Class I, Division 2, Groups A, B, C, D
Class II, Division 1, Groups E, F, G
Class II, Division 2, Groups F, G
Class III



Model: EX-NG-□□□

Explosion Proof Electrical Products

Ex-proof Connector



EXPLOSION PROTECTION

Marking ATEX

II 2 G Ex d eb IIC Gb
II 2 D Ex tb IIIC Db IP66-IP68

Marking IECEx

Ex d eb IIC Gb
Ex tb IIIC Db IP66-IP68

Marking UL1203

Class I, Division 1, Groups A, B, C, D
Class I, Division 2, Groups A, B, C, D
Class II, Division 1, Groups E, F, G
Class II, Division 2, Groups F, G
Class III



Model: EX-GJ-□-□-□-(□)/-□-□-(□)

Explosion Proof Electrical Products

Cable Gland



EXPLOSION PROTECTION

Marking ATEX

II 2 GD Ex eb IIC Gb
Ex tb III C Db IP66/IP68

Marking IECEx

Ex eb IIC Gb
Ex tb III C Db IP66/IP68

Ambient Temperature

-50°C ≤ Tamb ≤ +80°C

Connection Thread

Metric, NPT



Model: EX-QM01-A1

Explosion Proof Electrical Products

Cable Gland



EXPLOSION PROTECTION

Marking ATEX

II 2 GD Ex eb IIC Gb/ Ex db IIC Gb
Ex tb III C Db IP66/IP68

Marking IECEx

Ex eb IIC Gb/ Ex db IIC Gb
Ex tb III C Db IP66/IP68

Ambient Temperature

-50°C ≤ Tamb ≤ +80°C

Connection Thread

Metric, NPT



Model: EX-QM04-B1K



EXPLOSION PROTECTION

Marking ATEX

II 2 GD Ex eb IIC Gb/ Ex db IIC Gb
Ex tb III C Db IP66/IP68

Marking IECEx

Ex eb IIC Gb/ Ex db IIC Gb
Ex tb III C Db IP66/IP68

Ambient Temperature

-50°C ≤ Tamb ≤ +80°C

Connection Thread

Metric, NPT



Model: EX-QM03-C1K



EXPLOSION PROTECTION

Marking ATEX

II 2 GD Ex eb IIC Gb/ Ex db IIC Gb
Ex tb III C Db IP66/IP68

Marking IECEx

Ex eb IIC Gb/ Ex db IIC Gb
Ex tb III C Db IP66/IP68

Ambient Temperature

-50°C ≤ Tamb ≤ +80°C

Connection Thread

Metric, NPT



Model: EX-QM05-C1K

Explosion Proof Electrical Products

Cable Gland



EXPLOSION PROTECTION

Marking ATEX

II 2 GD Ex eb IIC Gb/ Ex db IIC Gb
Ex tb III C Db IP66/IP68

Marking IECEx

Ex eb IIC Gb/ Ex db IIC Gb
Ex tb III C Db IP66/IP68

Ambient Temperature

-50°C ≤ Tamb ≤ +80°C

Connection Thread

Metric, NPT



Model: EX-QM06-B1K

Explosion Proof Electrical Products

Cable Gland



EXPLOSION PROTECTION

Marking ATEX

II 2 GD Ex eb IIC Gb
Ex tb III C Db IP66/IP68

Marking IECEx

Ex eb IIC Gb
Ex tb III C Db IP66/IP68

Ambient Temperature

-50°C ≤ Tamb ≤ +80°C

Connection Thread

Metric, NPT



Model: EX-QM12-A1



EXPLOSION PROTECTION

Marking ATEX

II 2 GD Ex eb IIC Gb/ Ex db IIC Gb
Ex tb III C Db IP66/IP68

Marking IECEx

Ex eb IIC Gb/ Ex db IIC Gb
Ex tb III C Db IP66/IP68

Ambient Temperature

-50°C ≤ Tamb ≤ +80°C

Connection Thread

Metric, NPT



Model: EX-QM10-B1



EXPLOSION PROTECTION

Marking ATEX

II 2 GD Ex eb IIC Gb/Ex db IIC Gb
Ex tb III C Db IP66/IP68

Marking IECEx

Ex eb IIC Gb/Ex db IIC Gb
Ex tb III C Db IP66/IP68

Ambient Temperature

-50°C ≤ Tamb ≤ +80°C

Connection Thread

Metric, NPT



Model: EX-QM13-B1T

Explosion Proof Electrical Products

Cable Gland



EXPLOSION PROTECTION

Marking ATEX

II 2 GD Ex eb IIC Gb/Ex db IIC Gb
Ex tb III C Db IP66/IP68

Marking IECEx

Ex eb IIC Gb/Ex db IIC Gb
Ex tb III C Db IP66/IP68

Ambient Temperature

-50°C ≤ Tamb ≤ +80°C

Connection Thread

Metric, NPT



Model: EX-QM18-C1

Explosion Proof Electrical Products

Cable Gland



EXPLOSION PROTECTION

Marking ATEX

II 2 GD Ex eb IIC Gb/Ex db IIC Gb
Ex tb III C Db IP66/IP68

Marking IECEx

Ex eb IIC Gb/Ex db IIC Gb
Ex tb III C Db IP66/IP68

Ambient Temperature

-50°C ≤ Tamb ≤ +80°C

Connection Thread

Metric, NPT



Model: EX-QM22-B1K



EXPLOSION PROTECTION

Marking ATEX

II 2 GD Ex eb IIC Gb/Ex db IIC Gb
Ex tb III C Db IP66/IP68

Marking IECEx

Ex eb IIC Gb/Ex db IIC Gb
Ex tb III C Db IP66/IP68

Ambient Temperature

-50°C ≤ Tamb ≤ +80°C

Connection Thread

Metric, NPT



Model: EX-QM21-C1K

Explosion Proof Electrical Products

Control Switch



Model: Lw39

Rated Current: 16A, 25A

Rated Voltage: 500V AC, 400V DC