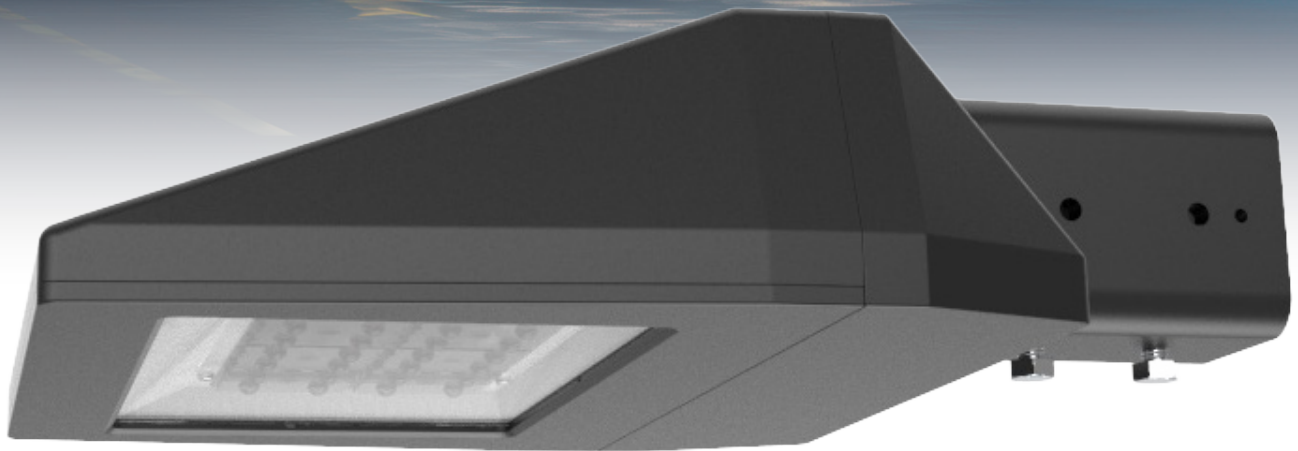


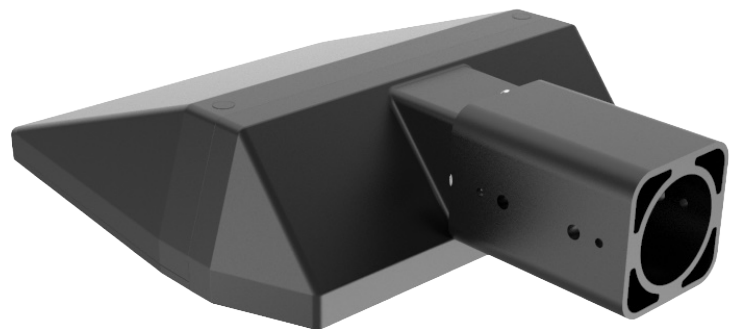
# KIRA

PROFESSIONAL LED AREA LIGHT

# IQL



***PATHWAY,  
CARPARK  
INDUSTRIAL***





## TECHNICAL

Light Source	Lumiled
Body	Aluminium
Body Colour	Black (other options available)
Fasteners	Stainless Steel
Colour Temperature:	4000K (3000K, 5000K 5700 available)
Average LED & Control Gear Life Projection	>102,000hrs @ L70
Beam Angle:	Type II/III/Type IV/Type V
Efficacy:	140Lm
CRI:	>90

## FEATURES

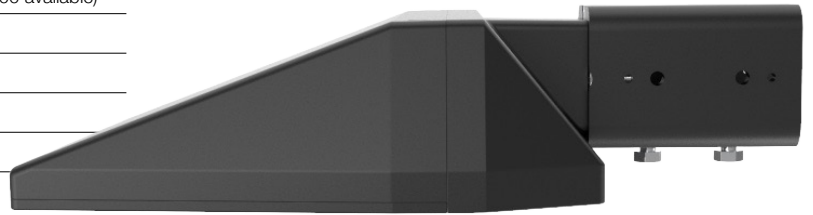
Modern stylish design

## ELECTRICAL

Power Supply	Inventronics
Input Voltage	100-277V/AC, 50-60 Hz
Dimming Options	DALI
Protection:	SCP, OTP, OVP, OCP
Power Factor:	>0.97
Ingress Protection Rating	IP66
Impact Rating	IK09
Certification	RCM

## ORDER CODES

Model	Lumens	LIGHT COLOUR	Weight kg	Size (in mm)		
				A	B	C
KIR-30	4,200Lm	4000K	5.5	328.02	103.05	442.5
KIR-50	7,000Lm	4000K	5.5	328.02	103.05	442.5
KIR-70	9,800Lm	4000K	5.5	328.02	103.05	442.5
KIR-100	14,000Lm	4000K	5.5	328.02	103.05	442.5
KIR-120	16,800Lm	4000K	5.5	328.02	103.05	442.5



\*NatureSpec wildlife safe amber light available on request

Technical Data sheets available on request. Model appearance may vary. | March 2025 specifications are subject to change without prior notice.