

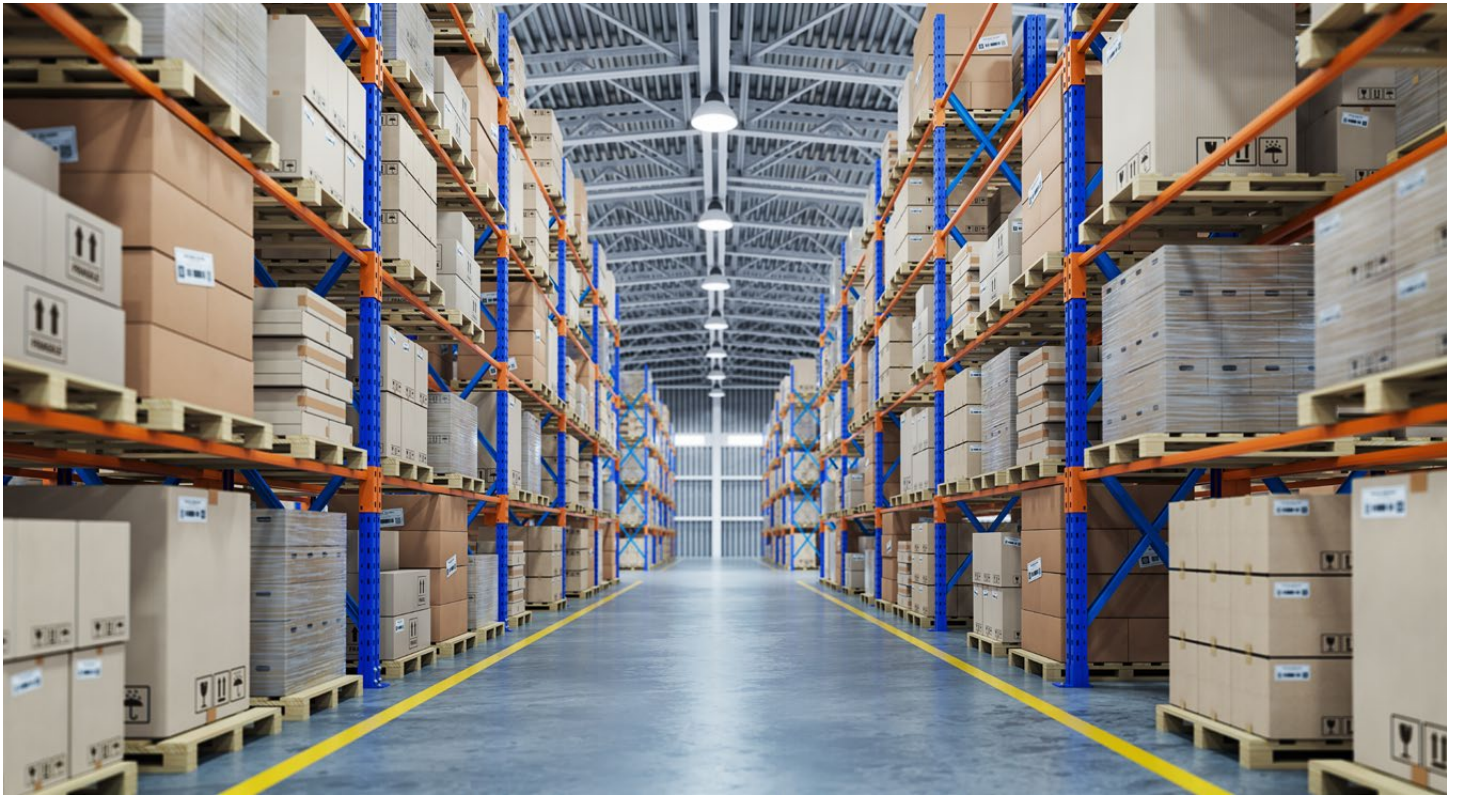
SATELLITE HP LED HIGH BAY

COMMERCIAL/INDUSTRIAL

IQL



**HIGH CEILING
APPLICATION**



TECHNICAL

Light Source	Lumiled
Body	Aluminium Alloy
Colour Temperature:	5000K (3000K, 4000k Optional)
Average LED & Control Gear Life Projection	>164000hrs L70
Beam Angle:	90D
Efficacy:	160 Lm/W
CRI:	Ra70
Mounting Options	Suspension Mount/Bracket Mount
Housing Colour	Black

ELECTRICAL

Wattage	300W 480W 600W
Power Supply	Inventronics
Dimming Options	Full Diming Options available
Protection:	6kv line-line, 20kv line-earth
Power Factor:	>0.92
Ingress Protection Rating	IP65
Impact Rating	IK08
Certification	RCM

ORDER CODES

Model	CCT	Lumens	DIMENSIONS (MM)	Weight
SAT-HP 300	5000K	48000	454 x 263	13.5kg
SAT-HP 480	5000K	76800	454 x 263	13.5kg
SAT-HP 600	5000K	96000	454 x 263	13.5kg

KEY FEATURES

Suitable for high applications up to 20m

Aircraft Hanger

Storage Facility



Technical Data sheets available on request. Model appearance may vary. | March 2025 specifications are subject to change without prior notice.