

# RHINO 66

SERIES

VANDAL RESISTANT

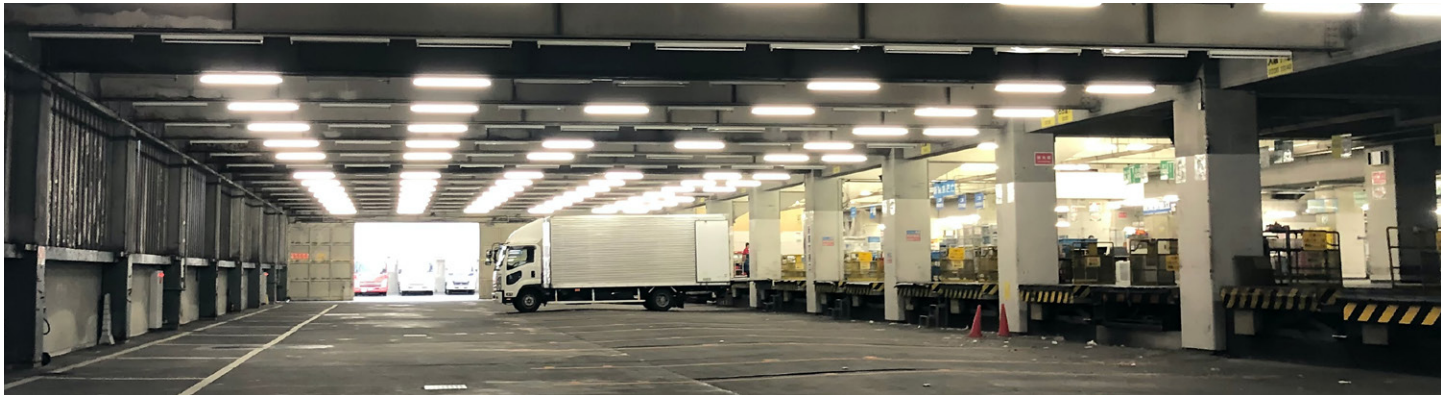
IQL



LINKABLE  
NON-FLICKER



**VANDAL & IMPACT  
RESISTANT LED BATTEN**



## TECHNICAL

<b>Body</b>	Aluminium, Polycarbonate diffuser
<b>Colour Temperature</b>	5000K ( also available in NSP Amber* options )
<b>Average LED and Control Gear Life</b>	>78,000 hrs (L70/Ta25c)
<b>Beam Angle</b>	120°
<b>Efficacy</b>	130 Lm/w
<b>CRI</b>	> 80
<b>Max Junction Temperature</b>	150°C
<b>Cooling</b>	Conduction, Convection
<b>Operating Range Tc</b>	-35°C – 50°C
<b>Thermal Management</b>	Aluminium Heatsink

## ELECTRICAL

<b>Power Supply</b>	Non-Flicker LED Driver
<b>Protection</b>	Over Voltage, Short Circuit and Over Temperature
<b>Power Factor</b>	> 0.96
<b>Total Harmonic Distortion (THD)</b>	<15%
<b>Ingress Protection Rating</b>	IP66
<b>Impact Rating</b>	IK10
<b>Certification</b>	RCM

## KEY FEATURES

- Quality Mitsubishi PC Lens
- SS304 Cable Gland and Respirator Valve
- Vibration Proof WAGO connectors
- Suitable for harsh environments



## ACCESSORIES

<b>RWP66-ANGCLIP</b>	Adjustable Angle Change Clip
<b>RWP66-BR</b>	45 Degree Metal Bracket
<b>RWP66-SUSCAB</b>	Suspending Steel Cable 1m Length

Technical Data sheets available on request. Model appearance may vary. March 2022 specifications are subject to change without prior notice.

## ORDER CODES

Model	Wattage	Light Colour	Lumens	Weight	Size (in mm)		
					A	B	C
<b>RWP66-600</b>	20 watts	5000K	2,600Lm	1.9kg	600	83	63
<b>RWP66-600-MS</b>	20 watts	5000K	2,600Lm	1.9kg	600	83	63
<b>RWP66-1200</b>	40 watts	5000K	5,200Lm	3.3kg	1200	83	63
<b>RWP66-1200-MS</b>	40 watts	5000K	5,200Lm	3.3kg	1200	83	63

Technical Data sheets available on request. Model appearance may vary. | March 2025 specifications are subject to change without prior notice.



\*NatureSpec wildlife safe amber light available on request