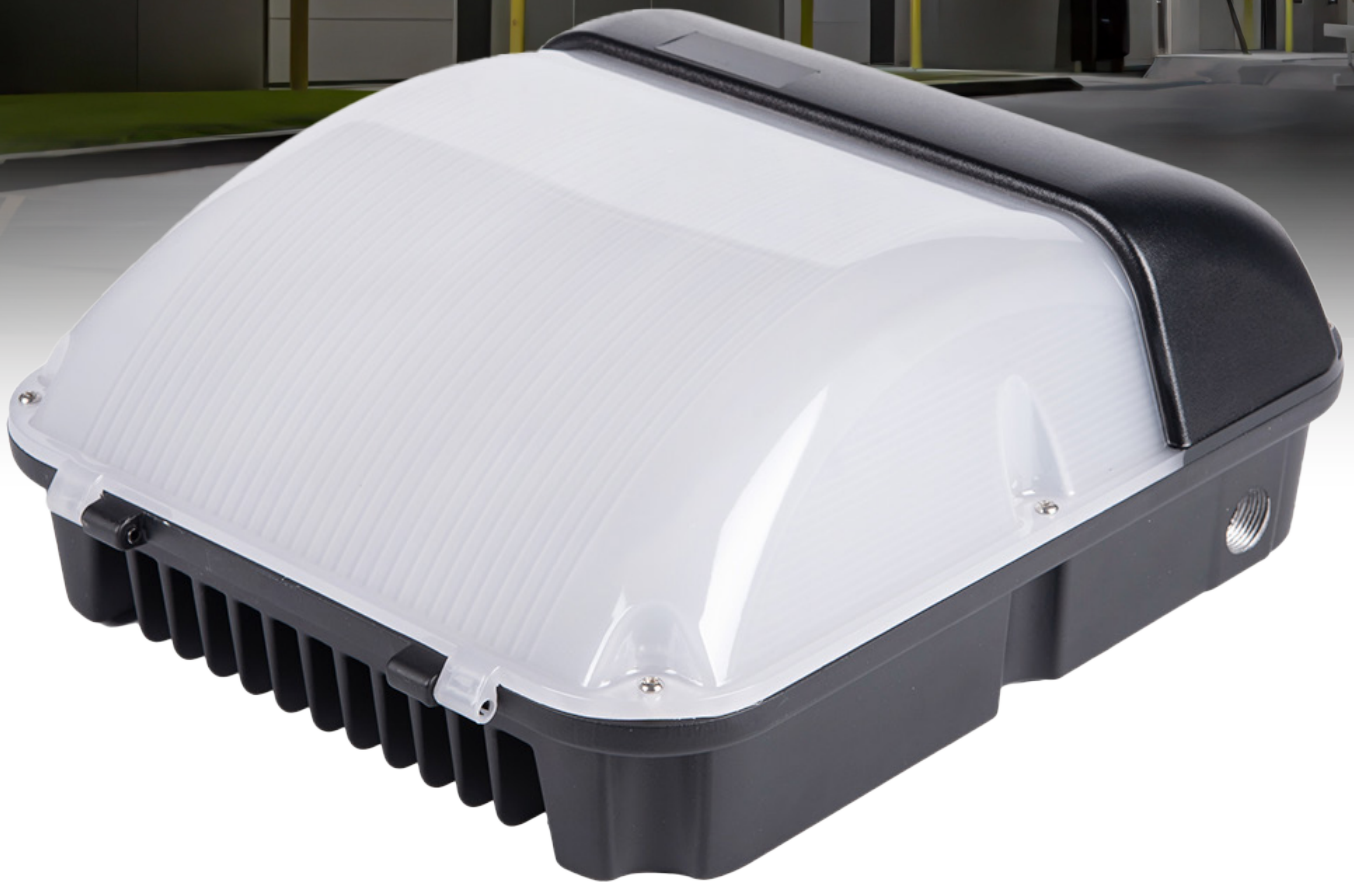


RHINO WALL PACK

COMMERICAL/INDUSTRIAL

GEN 2

IQL



SECURITY

PATHWAY AND PERMETER LIGHTING

BUILDING FACADES



TECHNICAL

Light Source	Lumiled
Power Source	Tridonic
Body	Cast-Aluminium
Body Colour	Black
Fasteners	Stainless Steel
Colour Temperature:	2700K/4000K/5000K/AMBER (NSP)
Power Change	36W/43W/54W
Average LED & Control Gear Life Projection	L70 > 100000hrs
Beam Angle:	120
Efficacy:	120Lm
CRI:	Ra80

ELECTRICAL

Operating Temp	-20- +50°C
Protection:	Class 2
Power Factor:	> 0.97
Ingress Protection Rating	IP65
Impact Rating	IK10
Certification	RCM

ORDER CODES

Model	Wattage	Light Colour	Lumens	Weight	Size (in mm)		
					L	W	H
RWPG2-54	54W/43W/36W/AMBER	2700K/4000K/4000K/AMBER	6480lm	2.1	310	265	122

KEY FEATURES

- PA12 Terminal Block
- CCT & Power Change
- Vandal Resistant
- Tridonic > 100000hrs
- Robust die-cast aluminium body



*NatureSpec wildlife safe amber light available on request

Technical Data sheets available on request. Model appearance may vary. | January 2026 specifications are subject to change without prior notice.